

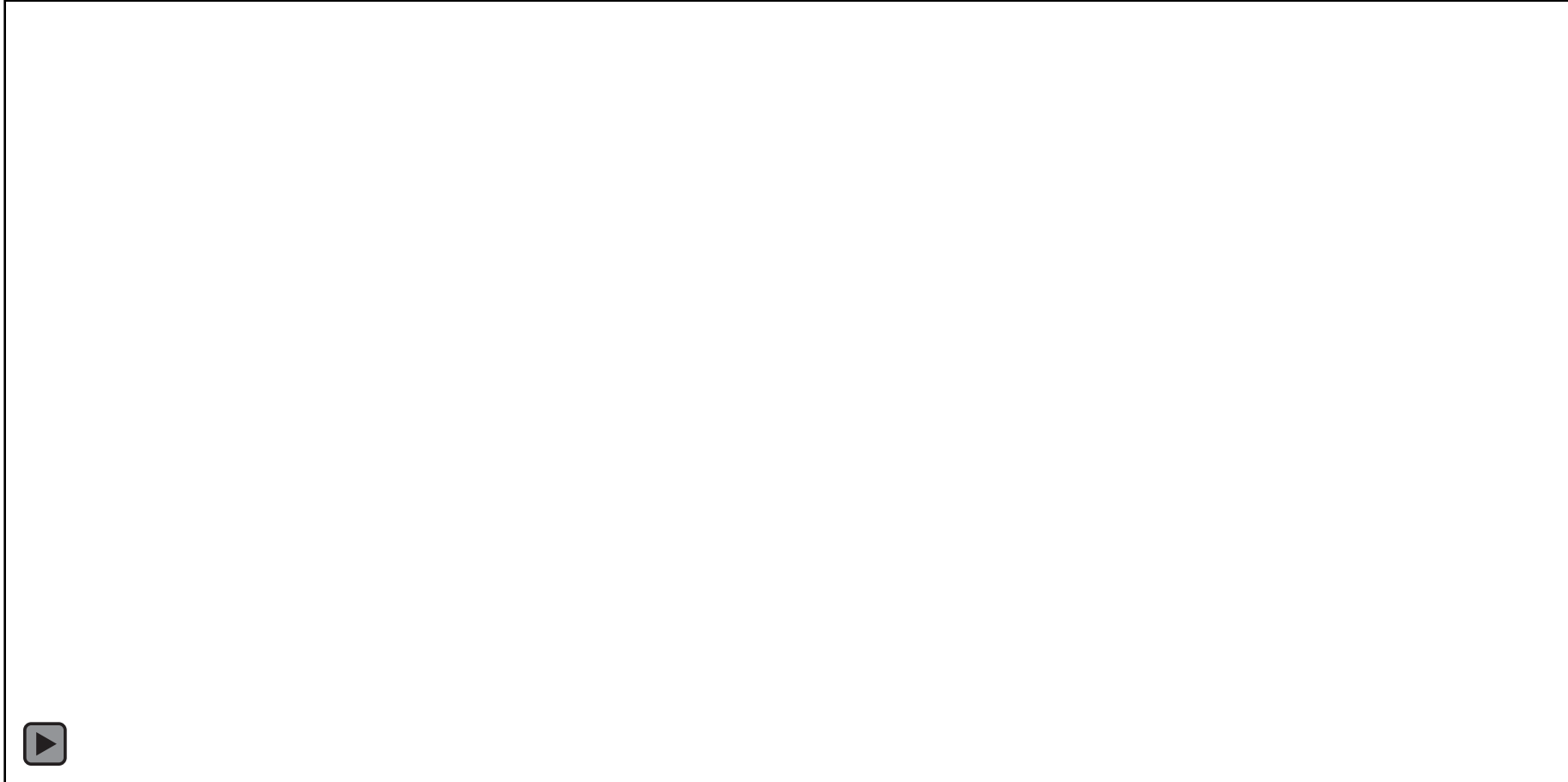
# Live Animal CT@IMBL

Michelle Croughan

[Michelle.Croughan@monash.edu](mailto:Michelle.Croughan@monash.edu)



# Lung liquid at birth – Where does it go?



# IMBL set up

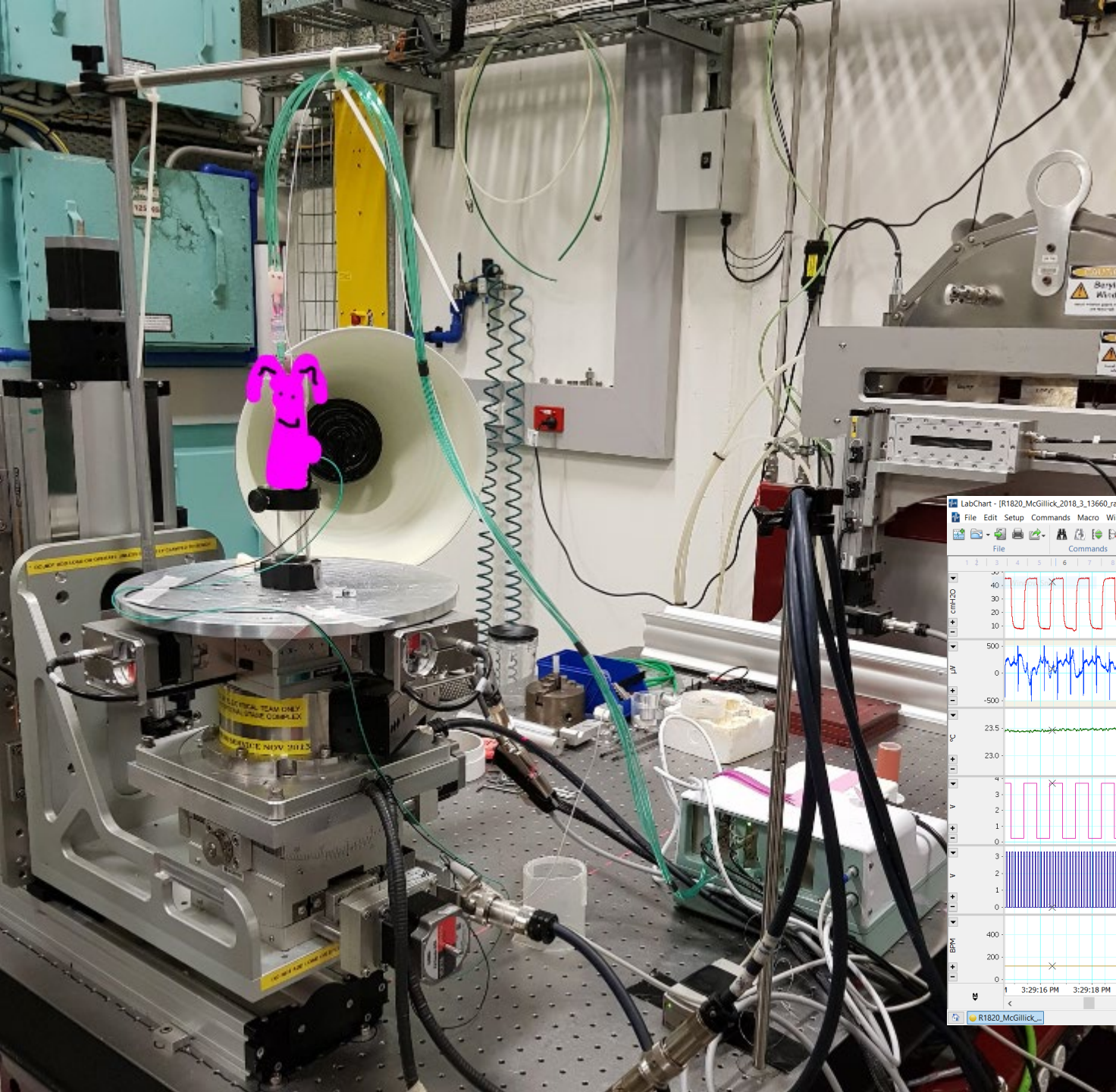
33keV energy

15ms exposure time

Imaging triggered off the ventilator

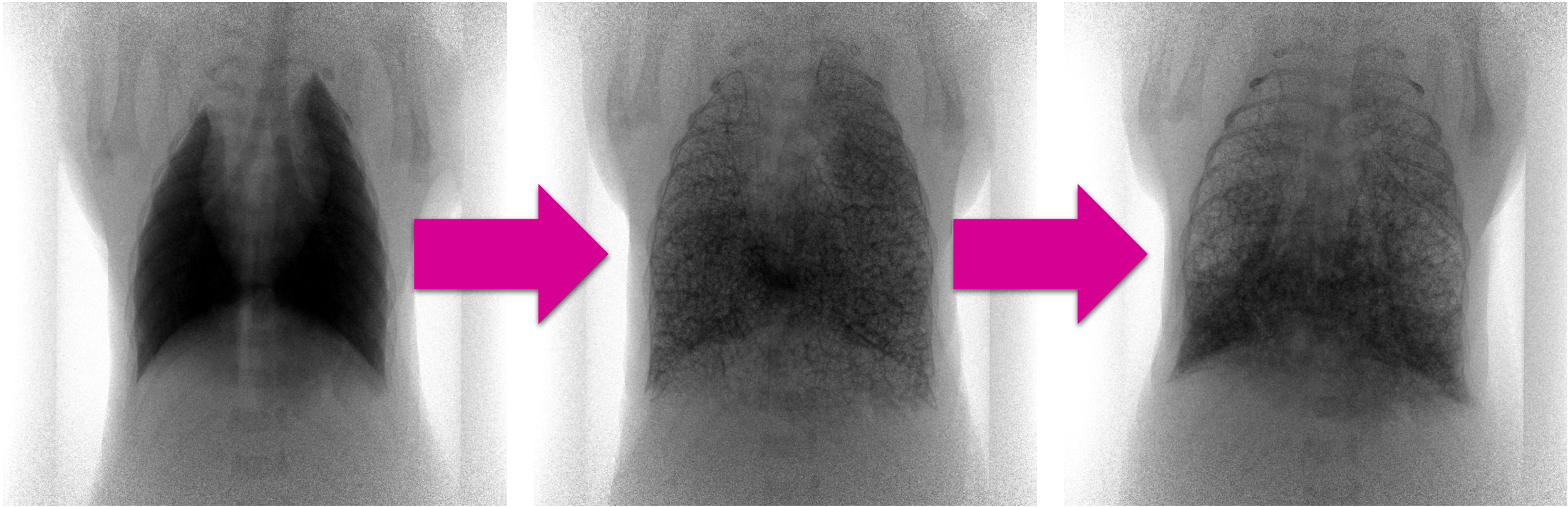
Object to detector – 70cm

Iodine contrast agent

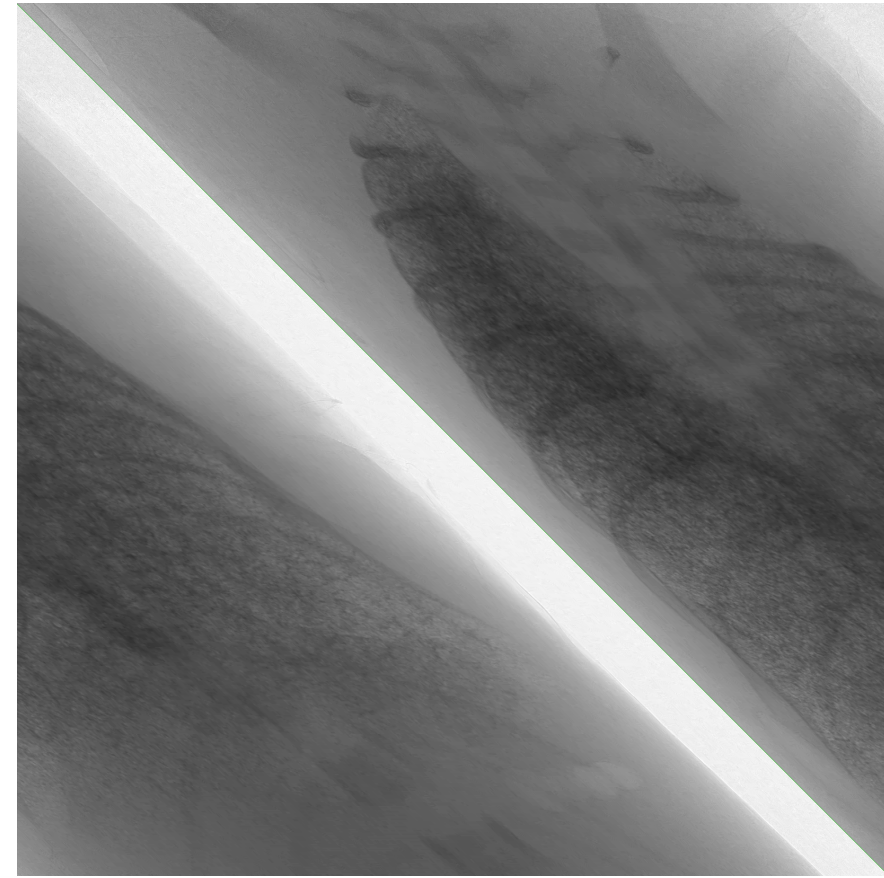
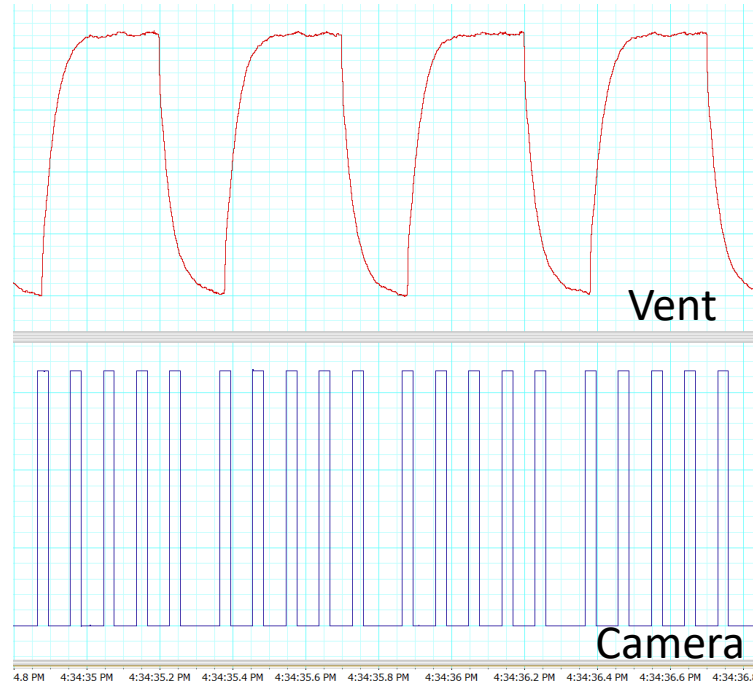
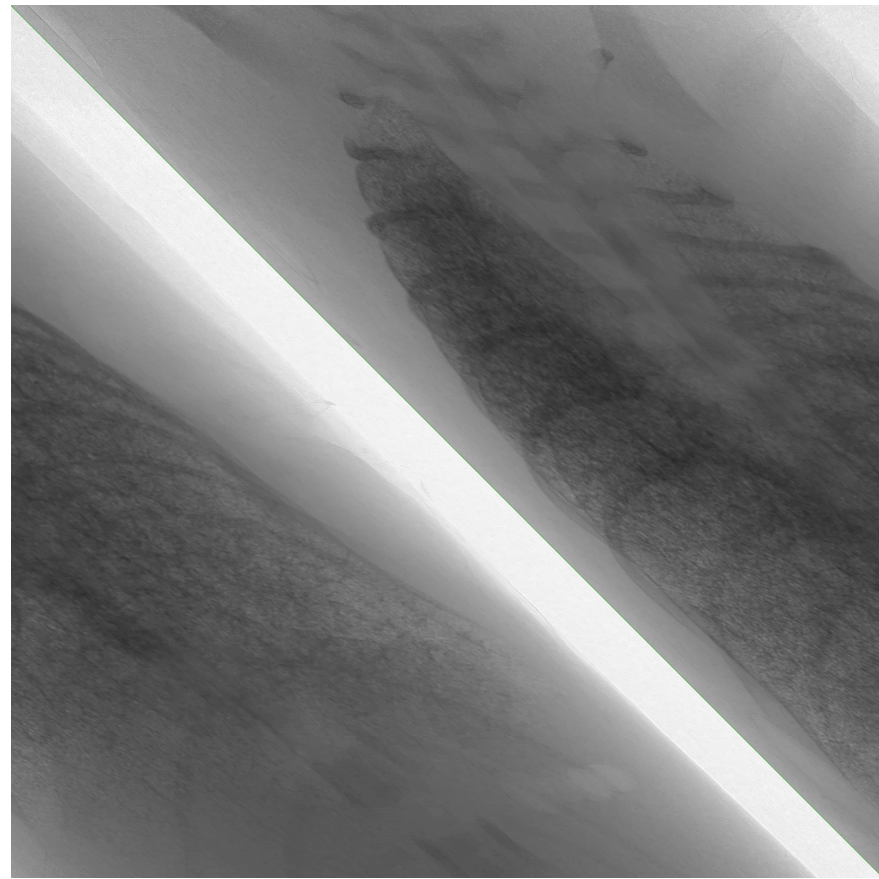




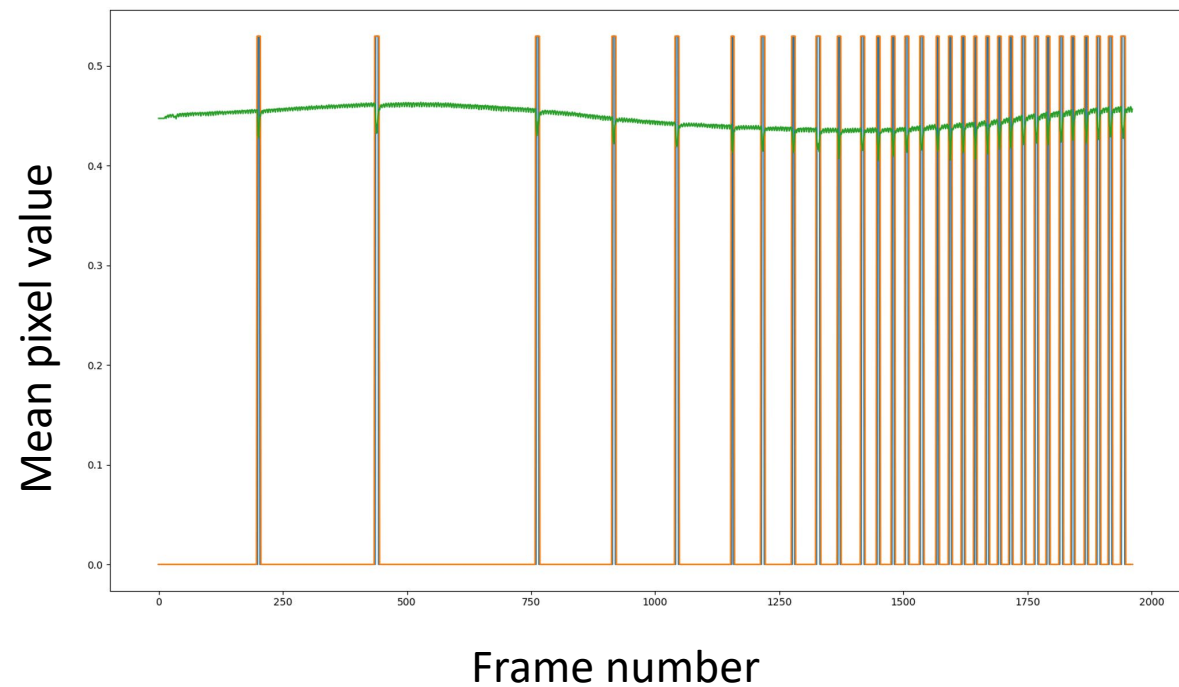
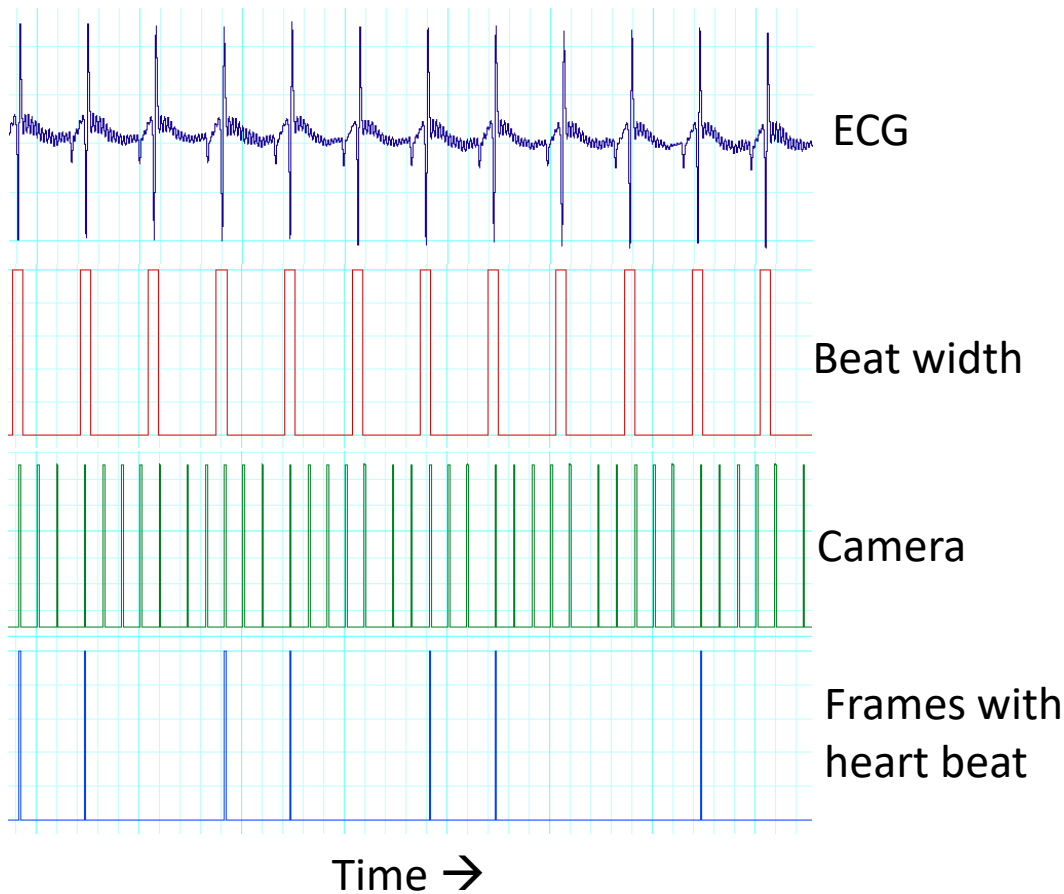
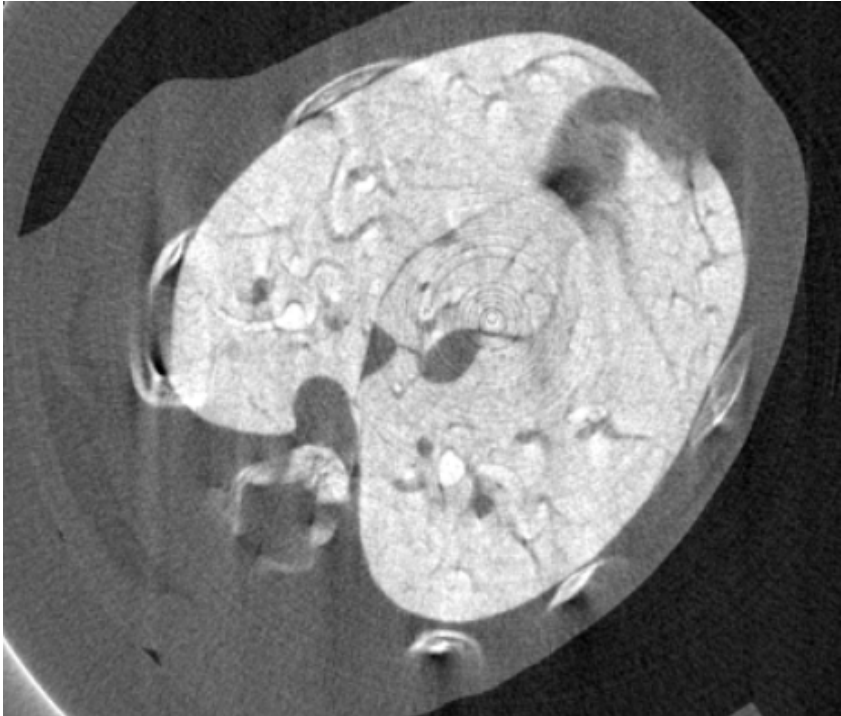
# Challenge 1 - Limited CT time



# Challenge 2 – Ventilator based imaging

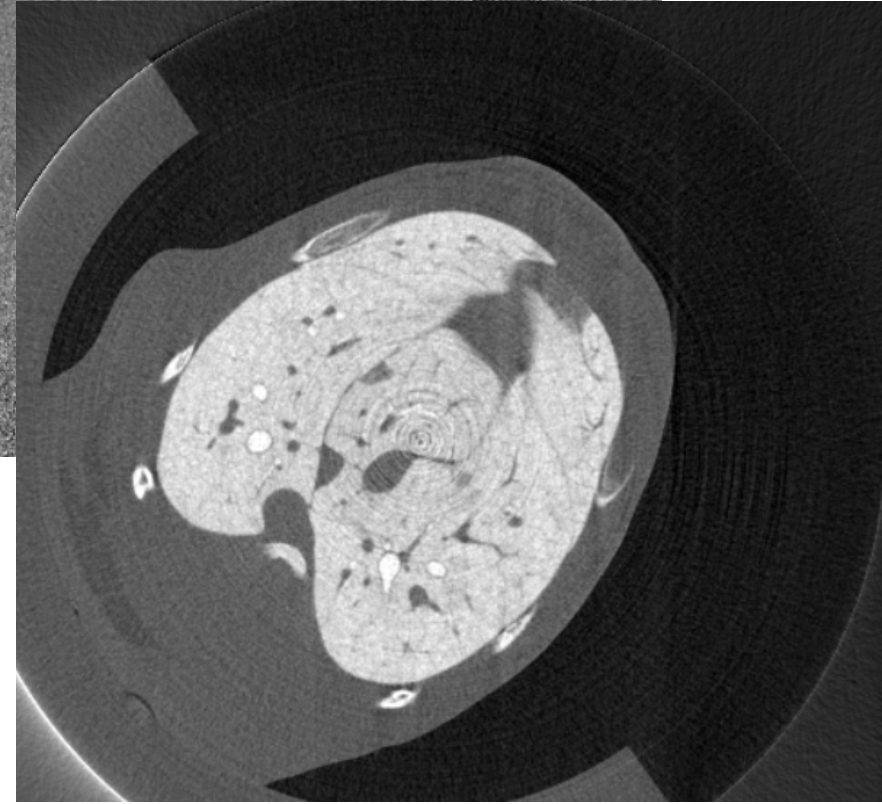
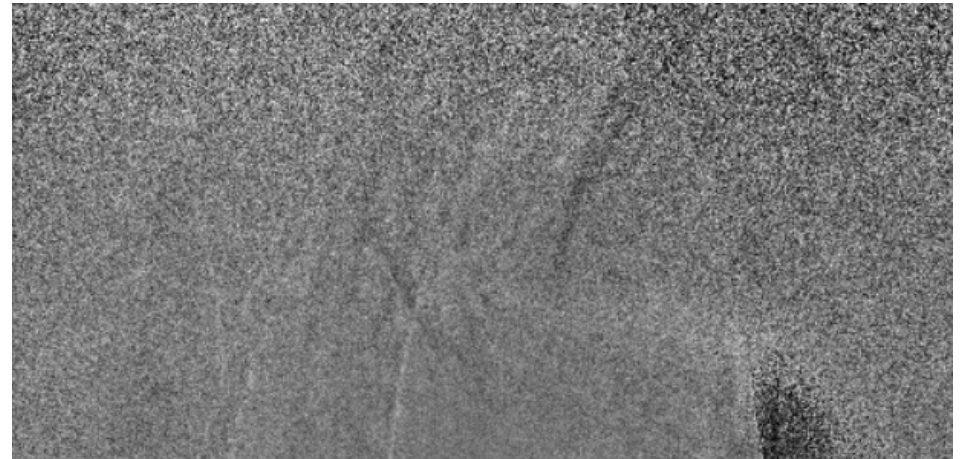
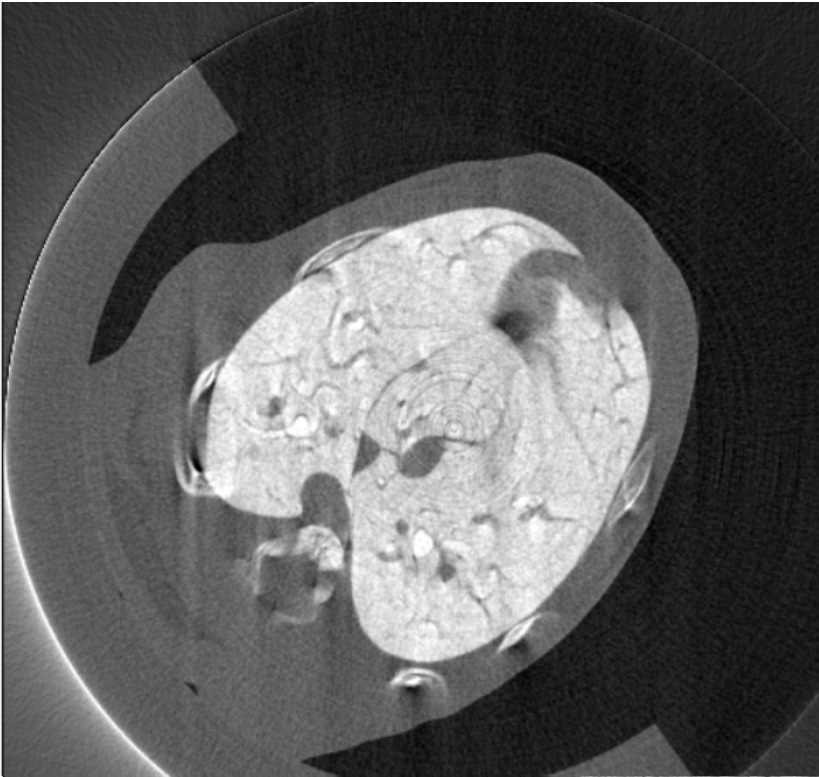


# Challenge 3 – Moving rabbit

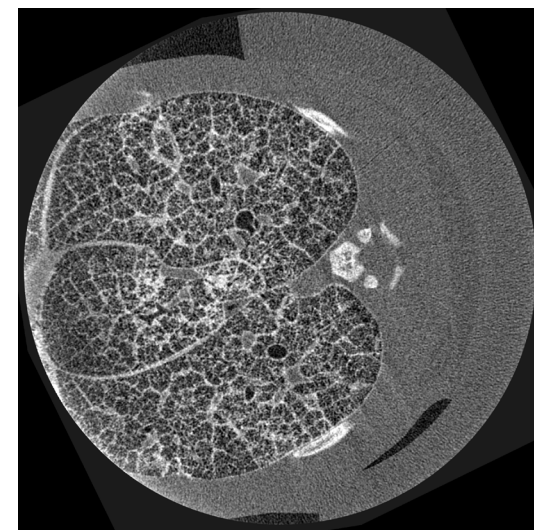
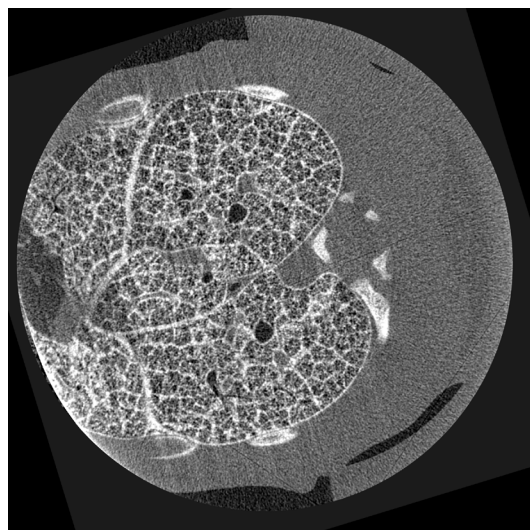
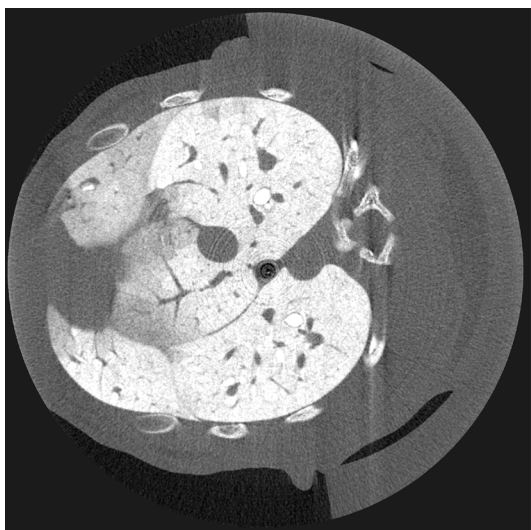
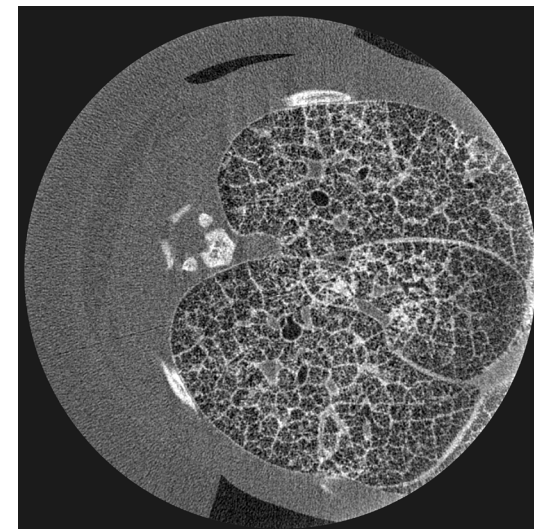
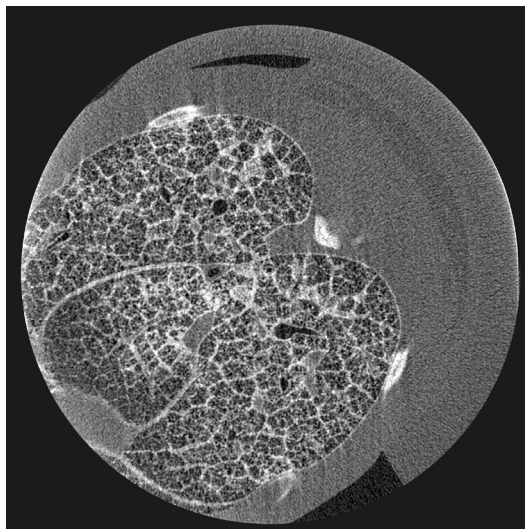
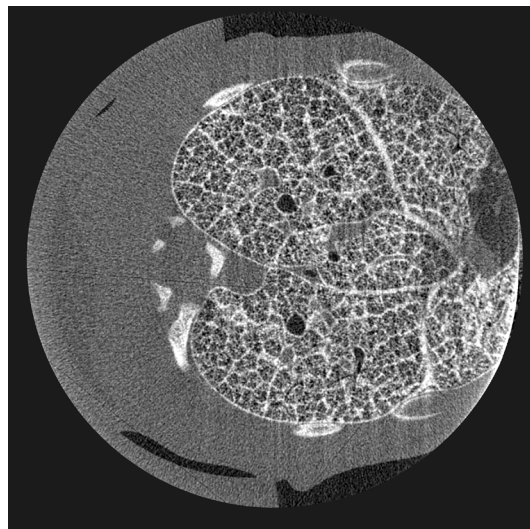
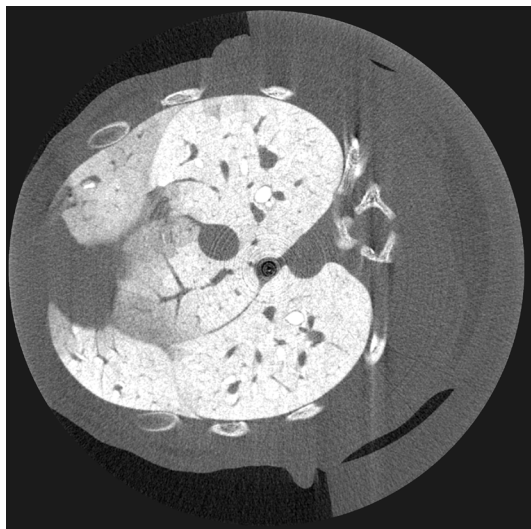




# Challenge 3 – Moving rabbit



# Challenge 4 – Stage alignment between scans



Thanks! Questions?

