



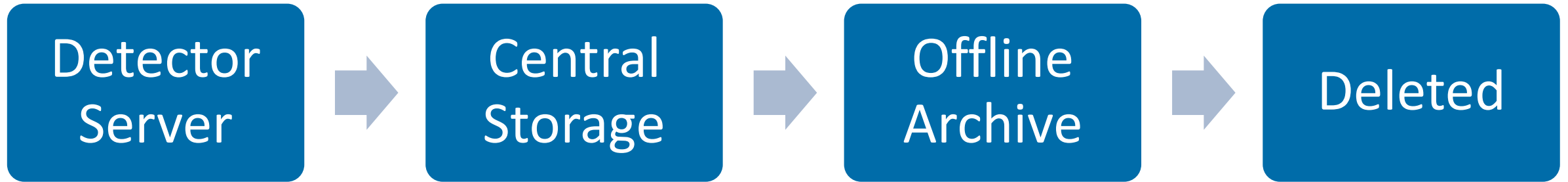
Data Management

Where your data is, and how to access it

Ron Bosworth

Science. Ingenuity. Sustainability.

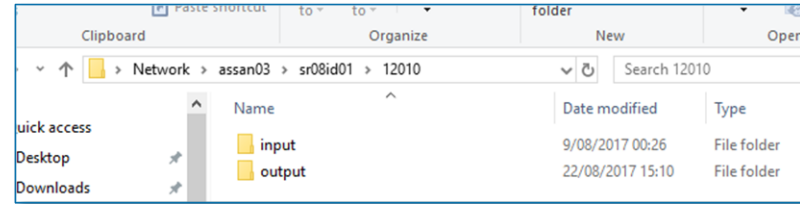
Data flow during your visit



- All data for a visit is stored in a folder on Central Storage, where it is accessible by analysis and management tools.
- Data may move to the Offline Archive after several months, and can be recalled upon request.
- Currently at IMBL, data expires and is usually deleted after 12 months.
- Raw data is read only.

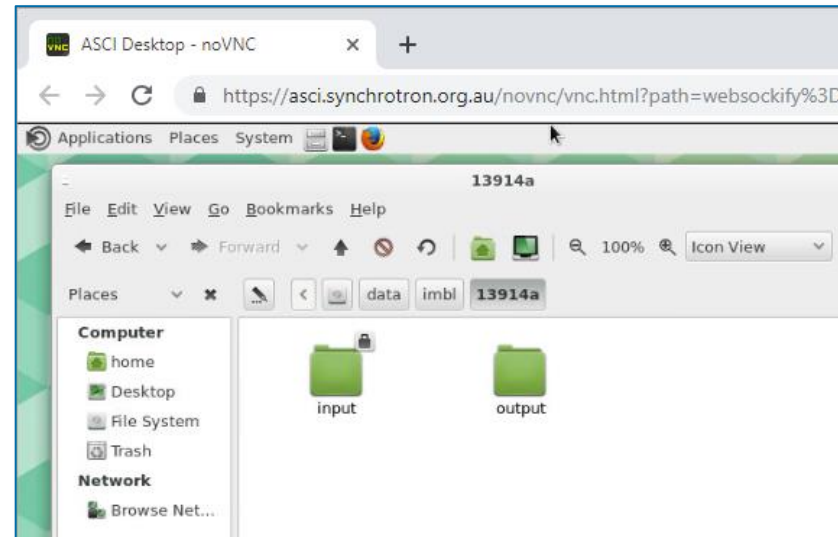
Access your data

- At the beamline during your visit using a file browser:



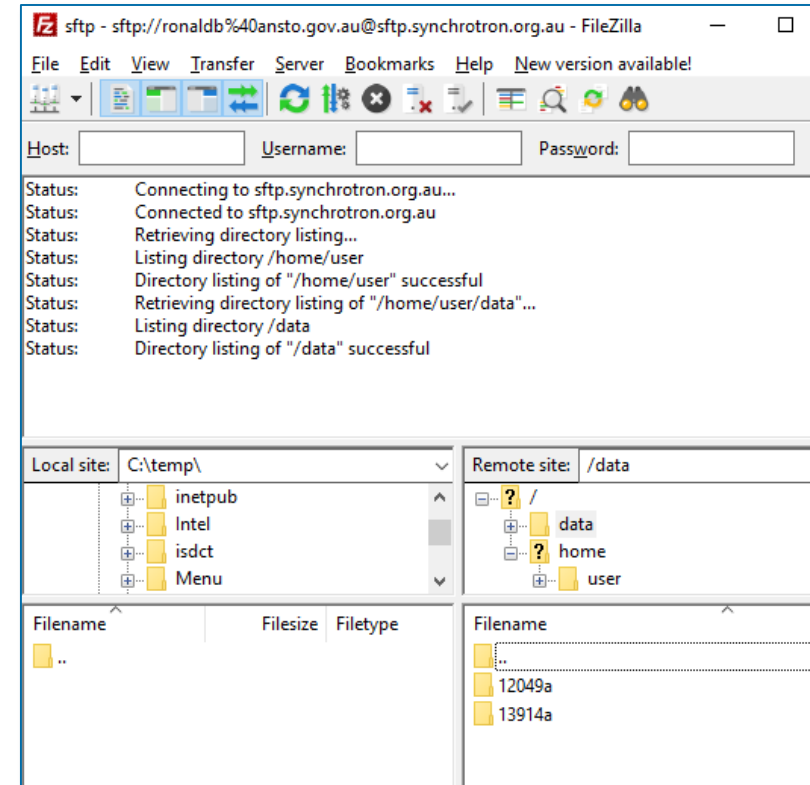
- Using ASCII via a web browser:

<https://ascii.synchrotron.org.au>



Download your data

- Using an SFTP client like FileZilla:
`sftp://sftp.synchrotron.org.au`



- Using an SFTP client like rsync:
(We can work with your local IT team to automate this!)

```
ron@straighttovideo ~
$ rsync -ain ronaldb@ansto.gov.au@sftp.synchrotron.org.au:/data/12049a /data/
The authenticity of host 'sftp.synchrotron.org.au (114.30.65.32)' can't be established.
ECDSA key fingerprint is SHA256:DPTs9mXhfukFzIZz6HAaHDrK7vexYuK0zCp9JpKc1w4.
Are you sure you want to continue connecting (yes/no)? yes
Warning: Permanently added 'sftp.synchrotron.org.au' (ECDSA) to the list of known hosts.
cd+++++++ 12049a/
cd+++++++ 12049a/data/
>f+++++++ 12049a/data/12049a.metadata
>f+++++++ 12049a/data/12049a.metadata.html
>f+++++++ 12049a/data/12049a.metadata.log
>f+++++++ 12049a/data/GaSh_nri
```

Help

- For help with ASCI or downloading your data, browse to <https://asci.synchrotron.org.au/> and click 'Help'.
 - Or email ascomputing@ansto.gov.au
- For everything else, please contact your friendly beamline scientist.