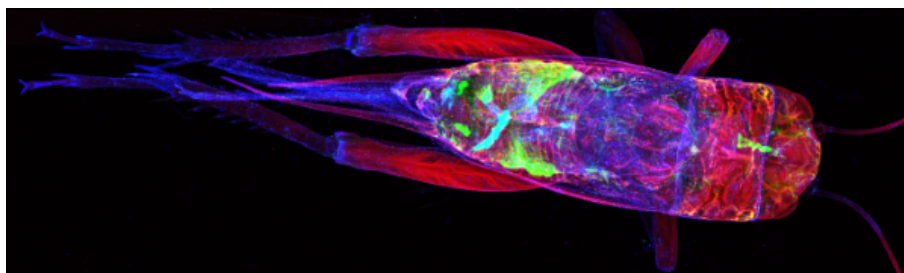


Australian Synchrotron Microscopy Beamlines Workshop 2024: A virtual 2-day event.



Contribution ID : 29

Type : **not specified**

Prospecting with the Synchrotron – from hunting for rare minerals to exploring for new nickel deposits

Friday, 1 November 2024 10:30 (30)

Dr. Louise Schoneveld is a Senior Research Scientist at CSIRO in Perth. She is currently investigating the changes in trace element signatures in minerals as possible indicators for magmatic nickel-copper-cobalt-platinum group element (Ni-Cu-Co-PGE) mineralisation. She has been at CSIRO since 2017 and has been using the XFM beamline at the Australian Synchrotron to aid in her research since 2018.

Presenter(s) : SCHONEVELD, Louise (CSIRO)